

Power distribution switch panels in a build-up system for individual switching installations for ship's supply. Standard circuit breakers with a nominal power rating of 8A are fitted. Circuit breakers with nominal power rating of 4A/6A/8A/10A/12A/16A may be fitted upon request or supplied for later fitting. STKZ self-adhesive labels (165 per page) are included. The power distribution unit is supplied wired for 12V/24V with the relevant cable diameter. The connection is made with flat spade terminals 6.3 mm on the back of the unit.

SERIES 100

The dimensions of the power distribution panels are matched to each other to allow the choice of horizontal or vertical combination.



Set of labels "STKZ"
Self-adhesive labels will be provided
(see page 19)



Circuit breakers with nominal power rating of 4A/6A/8A/10A/12A/16A may be easy exchanged later on



The connection is made with flat spade terminals 6.3 mm on the rear side of the unit



The electronic navigation lights monitor POS 6 supervises up to 6 navigation light circuits and recognises each failure of a bulb or LED or the break of the cables. Each navigation light will be shown by a relating control LED on the panel. The failure of a lantern will be announced by an optical and an acoustic alarm, which can be acknowledged. The relating diode will be blinking on the display. Both normal bulbs and LED lights can be supervised, even mixed.



STV 108 Order-No.: 0 2000 1080

8 power circuits with thermal circuit breakers (8 A), lamp diodes display, rocker switches.

Dimensions W 110 x H 145 x D 70 mm
Suitable terminal blocks type RKL 10



STV 106/1 Order-No.: 0 2000 1061

6 power circuits with thermal circuit breakers (8A), lamp diodes display, rocker switches and protected small socket with protective cap.

Dimensions W 110 x H 145 x D 70 mm
Suitable terminal blocks type RKL 10.



STV 105 Order-No.: 0 2000 1050

5 power circuits with thermal circuit breakers (8A), lamp diodes display, rocker switches, DC- and dual USB charging socket.

Dimensions W 110 x H 145 x D 70 mm
Suitable terminal blocks type RKL 10.



STV 106 Order-No.: 0 2000 1060

6 power circuits with thermal circuit breakers (8 A), lamp diodes display, rocker switches.

Dimensions W 110 x H 117 x D 70 mm
Suitable terminal blocks type RKL 10

Recommended wires cross section for consumers supply lines

| Circuit breaker A | 6 | 10 | 16 | 20 |
|----------------------|-----|-----|-----|----|
| Wire mm ² | 1,0 | 1,5 | 2,5 | 4 |

STV 110 Order-No.: 0 2000 1100

10 power circuits with thermal circuit breakers (8 A), lamp diodes display, rocker switches.

Dimensions W 110 x H 180 x D 70 mm
Suitable terminal blocks type RKL 10



PV -12 V Order-No.: 0 2801 0120
PV -24 V Order-No.: 0 2802 0120

Voltmeter with switch over for service- und starter battery as addition to switch boards series STV 100.

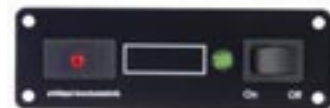
Dimensions W 110 x H 72,5 x D 80 mm



STV 103 Order-No.: 0 2000 1030

3 power circuits with thermal circuit breakers (8 A), lamp diodes display, rocker switches.

Dimensions W 110 x H 72,5 x D 70 mm
Suitable terminal blocks type RKL 10



STV 101 Order-No.: 0 2000 1010

1 power circuit with thermic circuit breaker (8 A), lamp diode display, rocker switch.

Dimensions W 110 x H 36,2 x D 70 mm



■ STV 118 -12 V Order-No.: 0 2001 1180
 ■ STV 118 -24 V Order-No.: 0 2002 1180

8 power circuits with thermal circuit breakers (8 A), lamp diodes display, rocker switches, LED illuminated voltmeter with switch over 1-0-2.

Dimensions W 220 x H 117 x D 90 mm
 Suitable terminal blocks type RKL 10



■ STV 412 -12 V Order-No.: 0 2001 4120
 ■ STV 412 -24 V Order-No.: 0 2002 4120

12 power circuits with thermal circuit breakers (8 A), lamp diodes display, rocker switches, LED illuminated voltmeter with switch over 1-0-2.

Dimensions W 220 x H 145 x D 90 mm
 Suitable terminal blocks type RKL 16/4



■ STV 316 Order-No.: 0 2000 3160

16 power circuits with thermal circuit breakers (8 A), lamp diodes display and rocker switches.

Dimensions W 220 x H 145 x D 70 mm
 Suitable terminal blocks type RKL 16/4



■ STV 312 (TCS) Order-No.: 0 2002 3120
 ■ STV 314 (BLS-Set) Order-No.: 0 2002 3140

12 power circuits with thermal circuit breakers (8 A), lamp diodes display and rocker switches. Monitor TCS or BLS-Set. The shunt SHE 300 is included in the scope of delivery of the STV 314. Further information on page 45ff.

Dimensions W 220 x H 145 x D 70 mm
 Suitable terminal blocks type RKL 16/4



■ STV 312/4 -SY -12 V Order-No.: 0 2501 3120
 ■ STV 312/4 -SY -24 V Order-No.: 0 2502 3120

Combined power distribution panel with navigation lights monitor for sailing yachts, 12 power circuits with thermal circuit breakers (8 A), lamp diode display, rocker switches as well as 4 additional circuit breakers (8 A), voltmeter with switch over, moving coil gauge, class 1.5. Display "Sloop" with electronic monitor POS 6.

Dimensions W 330 x H 145 x D 70 mm
 Suitable terminal blocks type RKL 16/4



■ STV 311/5 -12 V Order-No.: 0 2001 3115
 ■ STV 311/5 -24 V Order-No.: 0 2002 3115

11 power circuits with thermal circuit breakers (8 A), lamp diodes display, rocker switches as well as 5 additional thermal circuit breakers (8 A). Voltmeter with switch over 1-0-2, moving coil gauge, class 1,5.

Dimensions W 220 x H 145 x D 70 mm
 Suitable terminal blocks type RKL 16/4



POS-SY Order-No.: 0 2502 0000

Coated aluminium panel with yacht diagram - sailing yacht "Sloop" and electronic navigation lights monitor POS 6.

Dimensions W 110 x H 145 x D 40 mm



POS-KY Order-No.: 0 2500 0001

Coated aluminium panel with yacht diagram - sailing yacht "Ketch/Yawl" and electronic navigation lights monitor POS 6.

Dimensions W 110 x H 145 x D 25 mm



POS-MY Order-No.: 0 2500 0005

Coated aluminium panel with yacht diagram - "Power boat" and electronic navigation lights monitor POS 6.

Dimensions W 145 x H 110 x D 25 mm



UKW 3130 Order-No.: 0 2000 0502

For VHF devices with a double pole circuit breaker with integrated lamp diode (10 A).

Dimensions W 65 x H 50 x D 60 mm



STV 088 Order-No.: 0 2000 0880

8 thermal circuit breakers 8 A

Dimensions W 75 x H 145 x D 60 mm
Suitable terminal blocks type RKL 10.



STV 08 Order-No.: 0 2000 0080

8 rocker switches

Dimensions W 46 x H 145 x D 30 mm

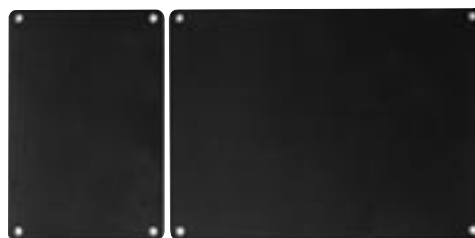


► All information about the labels listed here on www.philippi-online.de

Power circuit labels

Power circuit labels for individual power circuits mounted on panels. Self adhesive watertight vinyl foil. 165 different signs in languages German, Dutch, English, French, Dansk, Polish, Italian (only 62 labels). Dimensions 27 x 8 mm.

- **STKZ - D** Order-No.: 0 2900 1650
- **STKZ - NL** Order-No.: 0 2900 1651
- **STKZ - GB** Order-No.: 0 2900 1652
- **STKZ - I** Order-No.: 0 2900 1653
- **STKZ - DK** Order-No.: 0 2900 1655
- **STKZ - PL** Order-No.: 0 2900 1656
- **STKZ - F** Order-No.: 0 2900 1657



Blank panels

Blank panels for covering larger cut-outs and individual panels. Plastic-coated aluminium board with 4 mounting holes.

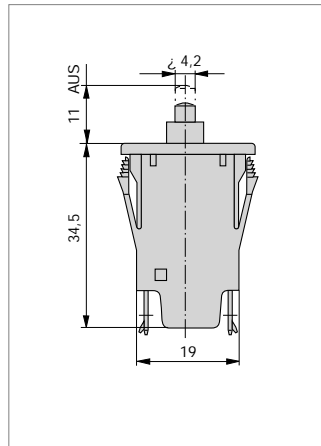
- **Blank panel Leer 103** Order-No.: 0 2900 1030
Dimensions W 110 x H 72,5 x D 2 mm
- **Blank panel Leer 108** Order-No.: 0 2900 1080
Dimensions W 110 x H 145 x D 2 mm
- **Blank panel Leer 316** Order-No.: 0 2900 3160
Dimensions W 220 x H 145 x D 2 mm

E-TA 1140-F114-P1-M1

Single pole thermal circuit breaker with push-to-reset, failsafe, trip-free (EN 60934). Snap-in type. Cut out measurement: 22 x 11.3 mm. Rated voltage DC 48 V, AC 240 V. Current ratings 4...16 A

Circuit breakers available ex stock

- E-TA 1140-F114-P1-M1-4A Order No.: 1 1140 0004
- E-TA 1140-F114-P1-M1-6A Order No.: 1 1140 0006
- E-TA 1140-F114-P1-M1-8A Order No.: 1 1140 0008
- E-TA 1140-F114-P1-M1-10A Order No.: 1 1140 0010
- E-TA 1140-F114-P1-M1-12A Order No.: 1 1140 0012
- E-TA 1140-F114-P1-M1-16A Order No.: 1 1140 0016



LED 3 mm

Lamp diodes with minimal power consumption of 6 mA (12V) and 12mA (24V). Connectable directly to 12/24V (DC 30V). Fitting hole: \varnothing 4,2 mm

- LED 3 mm, red Order No.: 7 0000 3050
- LED 3 mm, yellow Order No.: 7 0000 3051
- LED 3 mm, green Order No.: 7 0000 3052



LED 5 mm

Lamp diodes with minimal power consumption of 4 mA (12 V) / 8 mA (24 V). Connectable directly to 12/24V (DC 30V). Fitting hole: \varnothing 6,2 mm

- LED 5 mm, red Order No.: 6 0005 0600
- LED 5 mm, yellow Order No.: 6 0005 0610
- LED 5 mm, green Order No.: 6 0005 0620



LED 10 mm

Lamp diodes with minimal power consumption of 7 mA. (12V) / 16 mA (24V). Connectable directly to 12/24V (DC 30V). Fitting hole: \varnothing 10 mm

- LED 10 mm, red Order No.: 6 0005 1000
- LED 10 mm, yellow Order No.: 6 0005 1010
- LED 10 mm, green Order No.: 6 0005 1020



LED AC 230 V

Lamp diodes for AC 230V/50Hz.
SL 9: Fitting hole \varnothing : 8 mm. Cable length 20 cm.
LED 10: hole- \varnothing : 10 mm. connector 2,8 mm.

- SL 9 red (AC 230 V) Order No.: 6 0009 0557
- LED 10 mm, AC red Order No.: 6 0009 0028
- LED 10 mm, AC yell. Order No.: 6 0009 0128



- ZSD Order No.: 6 0018 0027

Starter lock (0 - Ignition - Start) for combustion engines with 2 keys mit 2 Schlüsseln. Depth 59 mm, hole- \varnothing 18 mm



- DT 12/24 L sw Order No.: 7 6014 8480
- DT 12/24 L rt Order No.: 7 6014 8481

Splash-proof pushbutton with long threaded shaft, dimensions 72 x \varnothing 28 mm, assembly hole \varnothing 14 mm, max. wall thickness 12 mm. Current carrying capacity 30 A. Degree of protection IP55.





- DT 12/24 K sw Order No.: 7 6014 8600
- DT 12/24 K rt Order No.: 7 6014 8601



Splash-proof pushbutton with short threaded shaft, dimensions 47 x \varnothing 27 mm, assembly hole \varnothing 22 mm, max. wall thickness 6 mm. Current carrying capacity 20 A. Degree of protection IP55.


Precision measuring instruments with coil cores for direct current and moving coil SQE for alternating current (Class 1.5), in contrast to the normally used instruments in the marine industry, are more precise and have an own consumption of only 1 mA.

Dimensions W 48 x H 48 x D 46 mm
Cut-out W 45,5 x H 45,5 mm

Analogue marine gauges with integrated LED-illumination. Watertight front part. Fitting hole \varnothing 52 mm, outer diameter \varnothing 58 mm. For the use at 24 V rated voltage a pre-resistor Rturo is needed for some gauges. Matching tank gauges: Water / Fuel / Waste Water please see page 51.

| VOLTMETER DC | |
|---|---|
|  | <ul style="list-style-type: none"> ■ SQS 48 /8-16 V Order No.: 6 0480 0816 ■ SQS 48 /16-32 V Order No.: 6 0480 1632 |
| AMMETER DC | |
| | <ul style="list-style-type: none"> ■ SQS 48 /0-25 A Order No.: 6 0481 0025 ■ SQS 48 /0-40 A Order No.: 6 0481 0040 |
| VOLTMETER AC | |
|  | <ul style="list-style-type: none"> ■ SQE 48 /0-250 V Order No.: 6 0485 0250 |

| VOLTMETER DC | |
|---|---|
|  | <p>Rated voltage 12 V or 24 V, Own consumption max. 65 mA/12 V or max. 32 mA (24 V), installation depth 76 mm</p> <ul style="list-style-type: none"> ■ 8-16 Volt Order No.: 2 0774 0611 ■ 16-32 Volt Order No.: 2 0774 0801 |
| OPERATING HOURS COUNTER | |
|  | <p>The hours meter indicates the effective working time of the engine from starting until stop. With LED illumination. Nominal voltage 12/24 V, power consumption 5 mA/14 V, Scale range: 0-99999,9 h, installation depth 83 mm</p> <ul style="list-style-type: none"> ■ Hours 52 Order No.: 2 0761 0461 |



MVD Order No.: 7 0010 1733

Very small DC voltmeter with OLED display, easy to read in daylight.
Front side waterproof IP66.

- 8-36 V DC, resolution 0,01 V, max. 13 mA
- Reverse polarity protected
- Mounting hole \varnothing 29 mm, Outer \varnothing 40 mm, depth 54 mm



MAD Order No.: 7 0010 1732

Very small DC ammeter with OLED display, easy to read in daylight.
Front side waterproof IP66.

- Range -100 - 0 - +100 A,
- Own consumption 15 mA.
- Delivery incl. shunt
- Mounting hole \varnothing 29 mm, Outer \varnothing 40 mm, depth 54 mm



MTD Order No.: 7 0010 1741

Very small DC temperature meter with OLED display, easy to read in daylight.
Front side waterproof IP66.

- Range -40 - +120°C,
- Own consumption 10 mA.
- Delivery incl. temperature sensor
- Mounting hole \varnothing 29 mm, Outer \varnothing 40 mm, depth 54 mm

Size comparison of the different instruments:





■ **STV 066/25 sw** Order-No.: 0 2800 6625

Plastic coated assembly plates for 1-pole rocker switch 21 x 15 mm.

Dimensions W 46 x H 25 x D 30 mm

■ **Panel 66/25** Order-No.: 0 2990 6625

Panel without switch. Dimensions as above.



■ **STV 066/40 sw** Order-No.: 0 2800 6640

Plastic coated assembly plates for 1-pole rocker switch 31,5 x 14 mm.

Dimensions W 46 x H 40 x D 40 mm

■ **Panel 66/40** Order-No.: 0 2990 6640

Panel without switch. Dimensions as above.



■ **STV 066/50 sw** Order-No.: 0 2800 6650

Plastic coated assembly plates for 2-pole press switch 33 x 25 mm.

Dimensions W 50 x H 46 x D 50 mm

■ **Panel 66/50** Order-No.: 0 2991 0018

Panel without switch. Dimensions as above.



Rocker switch 21 x 15 Order-No.:

- Switch off 0-1 5 1801 1102
- Touch button 0-1 5 1801 1202
- Ch-over switch 1-2 5 1803 1102
- Ch-over switch 1-0-2 5 1808 1103
- Ch-over switch 1-0-(2)touch 5 1808 1202
- Ch-over switch (1)-0-(2) 5 1808 1302
- Protective cap 5 2308 9011

Single-pole change-over button 21x 15 mm.
Cut-out 19 x 13 mm, spade terminals 4.8 mm



Rocker switch 31,5 x 14 Order-No.:

- Switch off ilum. 230 V 0-1 5 1830 3112
- Switch off 0-1 5 1831 3312
- Touch button 0-1 5 1831 3402
- Ch-over switch 1-2 5 1833 3302
- Ch-over switch 1-0-2 5 1838 3502
- Ch-over switch 1-0-(2) 5 1838 1602
- Ch-over switch (1)-0-(2) 5 1838 3402

Single-pole change-over button 31.5 x 14 mm.
Cut-out 30 x 11 mm, spade terminals 6,3mm



Rocker switch IP65 Order-No.:

- Switch off 0-1 5 1932 3112
- Ch-over switch 1-0-2 5 1939 3119
- Ch-over button (1)-0-(2) 5 1939 3312

2-poles of spray water protected rocker switches 33 x 25 mm. Enclosure IP65, installation cut-out 30 x 22 mm, spade terminals 6.3 mm, max 20A



Selector switch Order-No.:

- CG 4 A 241 (0-1-2-3) 6 4004 2410
- CG 4 A 232 (0-1-2-3-4) 6 4004 2320

Rated current 10 A
Panel 30 x 30 mm Depth 50 resp. 63 mm



Lever switch Order-No.:

- Lever switch 0-1 5 1821 1101
- Protective cap 5 3430 1023

Dimensions 21 x 15 mm. Hole \varnothing 12 mm,
spade terminals 4.8 mm.



Rocker switch Order-No.:

- WIP 25 5 2013 0112
- WIP 25 RD 12V (red LED) 5 2013 0210
- WIP 25 GN 12V (green LED) 5 2013 0212

Splashproof rocker switch \varnothing 25 mm (IP65).
Max. current 10A, Inst. hole \varnothing 20,2 mm,
spade terminals 4,8 mm



■ **ZSK 15** Order-No.: 5 0031 0104

Push-pull switch with a long tread shank.
Dimension-58 x \varnothing 14 mm (knob), Inst. hole \varnothing 8 mm. Wallthickness max.14 mm.Power load 15A.



■ **SL230 rt** Order-No.: 5 1837 3102
■ **SL230 gr** Order-No.: 5 1837 3108

Power control light AC 230 V/50 Hz.
Dimensions 31,5 x 14 mm.



Lever switch chrome Order-No.:

- Lever switch chrome 0-1 5 0031 6838
- Lever switch chrome (1)-0-(2) 5 0031 6592
- Lever switch chrome 1-0-2 5 0031 6594

Two-pole lever switch (15 A) with chrome lever.
Hole \varnothing 12 mm, spade terminals 6.3 mm.